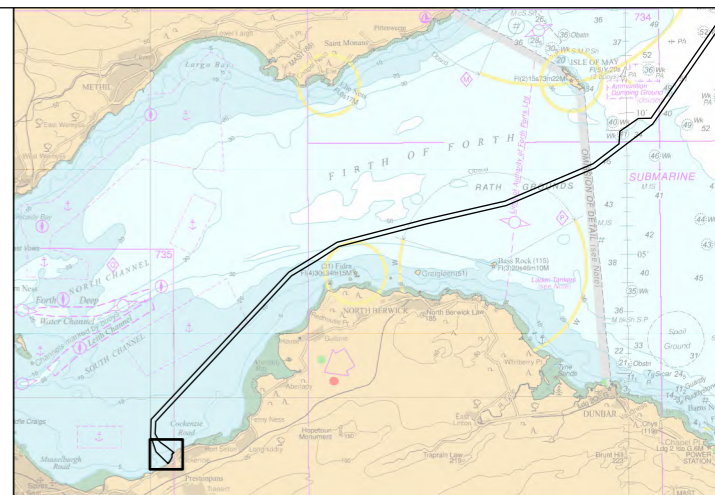


Id	Latitude (dd)	Longitude (dd)	Latitude (ddm)	Longitude (ddm)
1	55.961399	-2.98157	55° 57.68154702' N	002° 58.89429928' W
2	55.9664	-2.99072	55° 57.98303583' N	002° 59.44319605' W
3	55.971401	-2.98377	55° 58.28503100' N	002° 59.02614834' W
4	55.9678	-2.97539	55° 58.07004956' N	002° 58.52339284' W



Legend

- Proposed Landfall Construction Boundary
- Export Cable Agreement for Lease Boundary
- Proposed Export Cable Route
- Mean High Water (Springs)
- Mean Low Water (Springs)

Water Depth (m)

- 0 - 2.5
- 2.5 - 5
- 5 - 7.5
- 7.5 - 10
- 10 - 12.5

Note - between points 4 and 1, the boundary follow MHWS

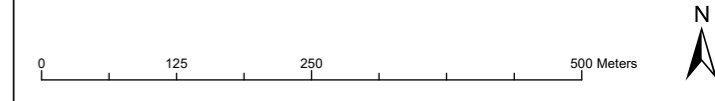
© Crown copyright 2022. All rights reserved. EK001-542200

04	-	-	-	-	-
03	-	-	-	-	-
02	23/08/2022	-	CT	CH	-
01	08/06/2022	-	CT	CH	-
Rev	Date	Status	Drwn	Chkd	Appd



Project
SEAGREEN 1A

Title
OPEN CUT LANDFALL BOUNDARY FOR LF00012-CST-OF-REP-0002



Esri, Intermap, NASA, NGA, USGS, Esri Community Maps Contributors, Esri UK, Esri, HERE, Garmin, Foursquare, GeoTechnologies, Inc, METI/NASA, USGS

Scale		Plot Size	Datum	Projection
1:7,000		A3	WGS84	UTM30N
Drawing Number			Sheet No.	
SEA1A-M-DES-0055-01			001 OF 001	